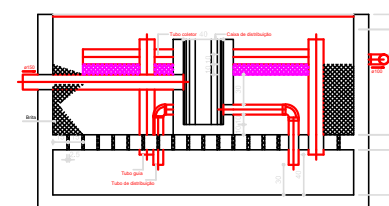
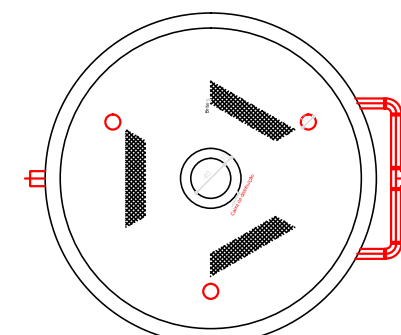


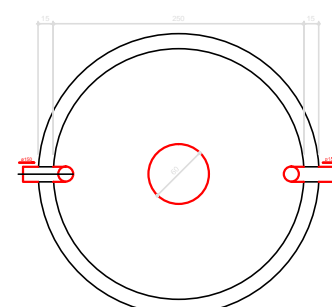
FILTRO ANAERÓBIO



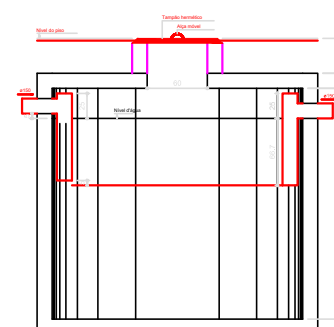
FILTRO ANAERÓBIO



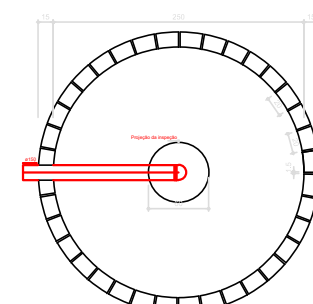
FILTRO ANAERÓBIO



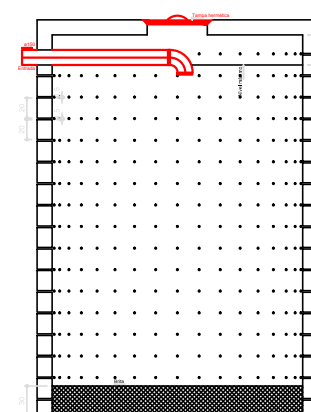
TANQUE SÉPTICO  
PLANTA BAIXA - ESC. 1:25



TANQUE SÉPTICO  
CORTE - ESC. 1:25



SUMIDOURO



SUMIDOURO



## PREFEITURA MUNICIPAL DE VÁRZEA GRANDE

Av. Castelo Branco, Espaço Municipal, 2500 - Centro Sul, Várzea Grande/MT  
CEP 78125-700 - Fone/Fax: 65 3688 8000

PROJETO:

CRECHE DO IDOSO

LOCALIZAÇÃO:

Avenida Presidente Arthur Bernardes s/n  
Bairro: Ipase - Várzea Grande - MT

ASSUNTO:

PROJETO SANITÁRIO

AUTORES DO PROJETO:

AUREO EMANOEL DA SILVA  
CREA: MT042435

DATA:

11/12/2019

ESCALA:

1/250

FOLHA N°

03/03